

Stoneywood Development in Aberdeen

Published: August 2025



03	Project Overview
03 - 04	Care Provider Selection
04	Tech System Requirements
05	Tech System Selection
05	Evaluation Plan
06	Conclusion
07 - 08	Appendix

Project Overview

Stoneywood is a new purpose built development in Aberdeen designed to accommodate eight individuals with high-level complex care needs. The site comprises semi-detached bungalows and a staff building.

The primary objective of the project is to work within the principles of [the Scottish Government's "Coming Home" report](#). This includes a “focus on strengthening the capacity of the community to develop good quality, safe and resilient services, with the right kind of accommodation and staff with the right kind of skills, in order to reduce the need for hospital admission and out-of-area placements”.

The development is in its final stages, with the support of Aberdeen City Health and Social Care Partnership (ACHSCP, identified individuals will moved into their new homes from August 2025 onwards.



Image 1: External View 1

Care Provider Selection

[The Richmond Fellowship Scotland](#) is the approved Provider of choice for Stoneywood. They are experienced in supporting and enabling individuals who have very complex care and support needs to live as independently as possible. The Richmond Fellowship Scotland have a wealth of experience in supporting people within their own homes and in the local community; enabling individuals to achieve their goals and aspirations.

The Richmond Fellowship Scotland have experience of working with the [Just Roaming](#) technology enabled care (TEC) system which has been integrated into the Stoneywood service. In addition, their Positive Behaviour Support Advisor will be actively involved to ensure that the TEC is person specific.



Image 2: External View 2

Tech System Requirements

When selecting technology for Stoneywood, several key requirements were considered:

- The equipment must be durable and not easily damaged
- The equipment must not be accessible to residents to ensure their safety
- The technology must include a staff safety element to protect and support both residents and staff
- Integration with handsets is essential to minimise the number of devices staff need to carry whilst they are providing care to residents
- The technology can link directly with ACHSCP's Alarm Receiving Centre (ARC).

Tech System Selection

ACHSCP conducted an options appraisal to evaluate available technology solutions. The Just Roaming system was selected because it's a cost per person price model enabling flexibility of the system which ensures that individuals needs are met safely.

One of the key advantages of this being that the technology is bespoke, meaning that services can be tailored to the individual support needs of the residents. This bespoke approach ensures that personal support and health needs are taken into consideration to determine the appropriate technology for each individual.



Image 3: Complex Care Bedroom

Evaluation Plan

ACHSCP, in conjunction with The Richmond Fellowship Scotland, will evaluate the service 12 months after its opening to establish how the model of the service and how the technology system has enabled individuals to be more independent. This evaluation will demonstrate how the TEC has enhanced the quality of care provided.

The ACHSCP's data team is engaged in ensuring a comprehensive assessment of benefits, aiming to demonstrate how the TEC at Stoneywood enhances the quality of care provided and services delivered to residents of this impressive new facility.

Evaluation measures include:

- Benefit for the service user from use of TEC
- Benefit for the staff, carers, and family from use of TEC
- Benefits for the care provider from use of TEC
- Financial benefits

Conclusion

In conclusion, the Stoneywood Development in Aberdeen represents a significant achievement for ACHSCP. The design of the Stoneywood Development and TEC service will enhance the quality of care, support, and ensure the safety and well-being of both residents and staff.

ACHSCP is committed to evaluating the impact of this TEC on residents' lives. A robust and comprehensive 12-month evaluation will be completed to evidence this.

The Digital Office's Digital Telecare team will be working closely with ACHSCP throughout this journey, supporting them with benefits realisation, and sharing updates on this project to Telecare Service Providers across Scotland.



Image 4: Complex Care Livingroom

Appendix

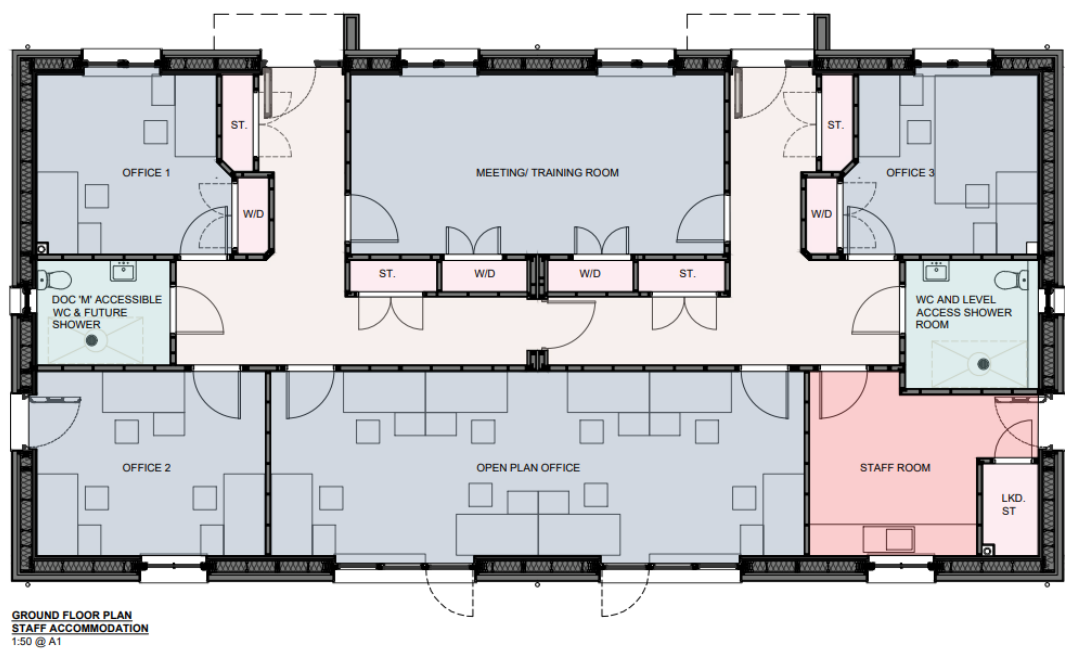
Appendix 1: Residential Development proposed site plan



Appendix 2: Residential Ground Floor Plan



Appendix 3: Staff Accommodation Floor Plan



© 2025 The Digital Office for
Scottish Local Government

The Digital Office, 19 Haymarket
Yards, Edinburgh EH12 5BH

